

Document number: BP-01-UM-019_6A
Document date: 13.10.2020

User Manual

BAZEPORT WEB APP



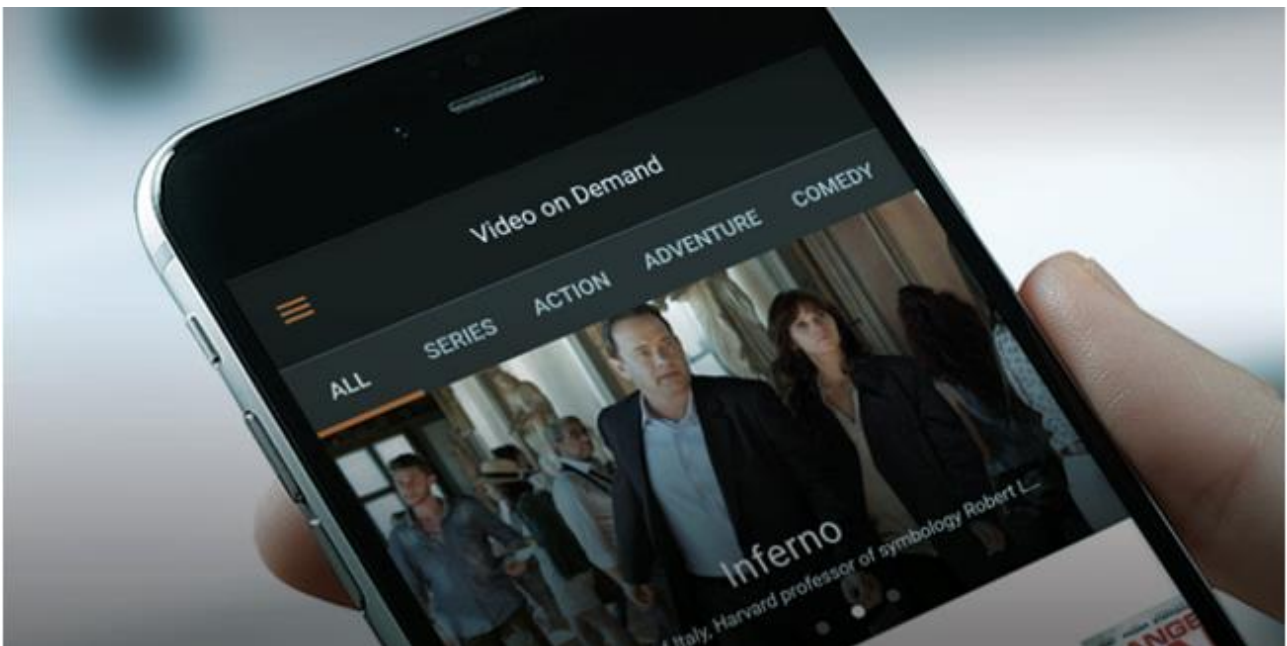
CONTENT

- THE BAZEPORT WEB APP 4**
- NAVIGATION AND GENERAL INFORMATION 5**
 - MAIN MENU 5
 - LANGUAGES 5
- HOME 6**
- SEARCH..... 7**
- INFORMATION 8**
- NEWS 9**
- PODCASTS 10**
- RADIO 11**
- ENTERTAINMENT 12**
- TV 13**
- TV ARCHIVE 14**
- ABOUT THIS DOCUMENT 14**

THE BAZEPORT WEB APP

BazePort is available as a web app. With the app, **BazePort** can be accessed from your personal device. The **BazePort web app** lets you consume information, watch Video on demand and live TV.

You can access the **BazePort web app** on the web address: **bazeport.tv**. Please make sure you are connected to local Wi-Fi.



DID YOU KNOW?



What BazePort functions do you have access to from personal device?

The following applications are supported on BazePort PDE and may be available on the BazePort PDE web app (depending on licenses and what your system owner has prepared):

- Live TV playback
- Live Radio playback
- Video on Demand playback
- News service playback application
- Podcast for radio and TV podcast playback
- Search content
- Information Portal

NEED HELP?



Do you not have access to BazePort from your personal device?

You need to be connected to your local Wi-Fi in order to have access to BazePort web app. Contact your local Wi-Fi administrator for help on this.

Your device must have a HTML5 capable browser. The recommended browsers are: Safari on Apple iOS devices and Chrome on other devices.

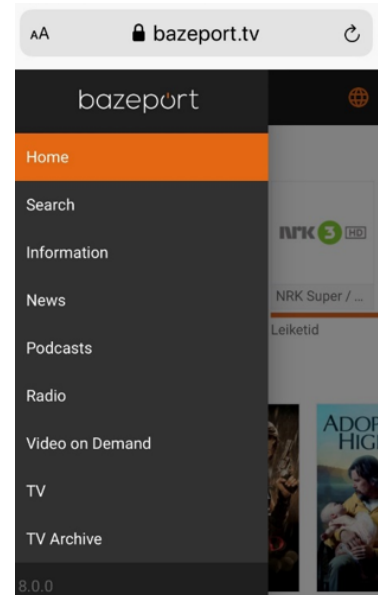
NAVIGATION AND GENERAL INFORMATION

MAIN MENU

The main menu on the left hand side is used for navigating between the different sections.



Click on the **More** icon to see the menu.



LANGUAGES

The web app is available in several languages for you to choose from. *Català, Chinese, English, Español, Filipino, Français, Norsk, Portuguese (BR)* and **Svenska**. More languages may become available later.



Click on the **World** icon to see the list of languages.

DID YOU KNOW?



The menu section may be visible at all times on some screens

On screens wide enough (over 1024px) the main menu is visible at all times (in docked mode). If the screen is less than 1024px wide, the hamburger icon located on the top bar needs to be pressed to display the menu.

You can see the BazePort software version from your app

In the bottom of main menu you can see the BazePort web app software version.

NEED HELP?



Do you not see the same menu items in the main menu?

The menus and content available in the web app depend on what BazePort licenses and content subscriptions your system owner has purchased. It also depends on how your system administrator has configured the menus and content.

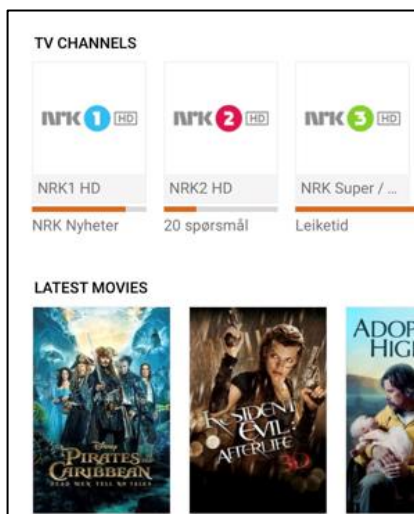
HOME

The start page is available from the main menu. This is the **Landing page** for the app.



At the top of this page there may be a **Carousel**. The **Carousel** items will respond to swipe left and right. To further explore the items, the user can tap on a carousel item to display the entire content.

Below the **Landing page carousel** there may be a selection of content from the **Info Portal**. The user can browse through the items and the items can be tapped to display these pages in their entirety.



Below content from the **Info Portal** there may be is a selection of live TV channels and recently added movies. The TV channels can be tapped to start viewing, and the movie posters can be tapped for a detailed view of the desired title.

DID YOU KNOW?



Information items may not be available in your web app

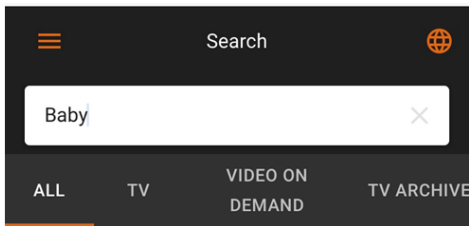
The information displayed as carousel item or pages from Info Portal below the carousel are available only if super user has configured it in the administration tool. For a detailed explanation on how to tag Info portal pages, please refer to the BP-01-UM-015 User Manual BazePort Management Studio – Publish.

TV channels and movies may not be available in your web app

Live TV and movies requires extra BazePort licenses, hardware and configuration and may not be part of the BazePort system you are accessing using the web app. TV and movies may also require subscriptions from TV channel providers or BazePort Content Services.

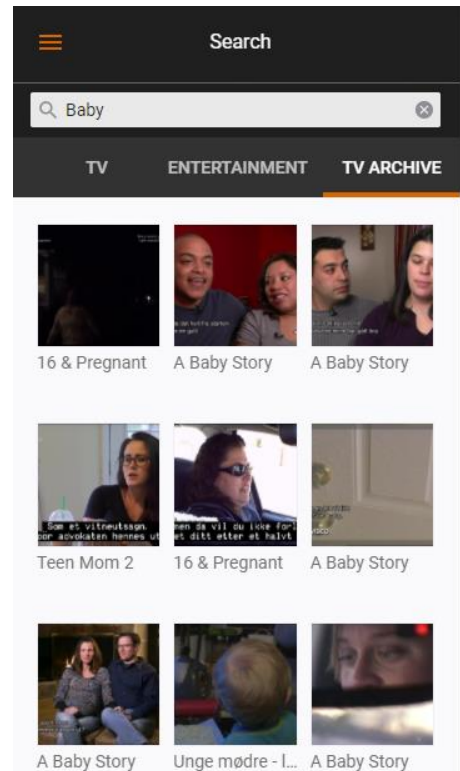
SEARCH

The **Search** function is available from the main menu and can be used to find movies, series and recorded TV programs quickly. In the example, the user has searched for *Baby*.

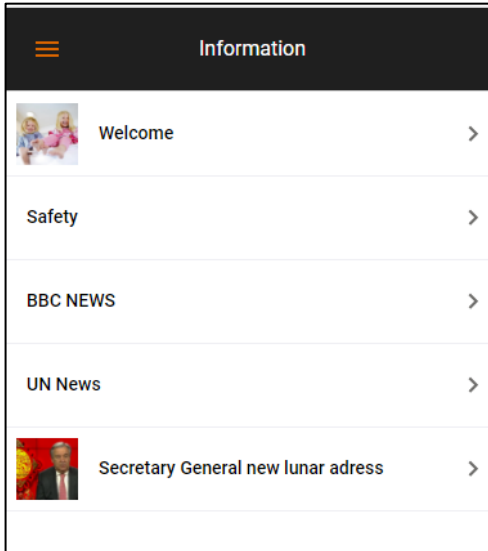


To only display results from one category, like *TV Archive*, select the category to display at the top. In the example to the right, the user has chosen the category *TV Archive* and the result below is filtered to show results from just this category.

Tap any of the result items to start watching.



INFORMATION



From the menu item **Information** user can open information pages after browsing through a menu. The user taps a page or page group item in the displayed list to open the page or page group.

If a page group is tapped, a list of the pages and page groups inside is displayed. If a page is tapped, a detailed view of this page is displayed. If the page contains a video, there is a play button as shown to the right.

The < button located on the top left hand side can be tapped to navigate back to the previous level.



DID YOU KNOW?

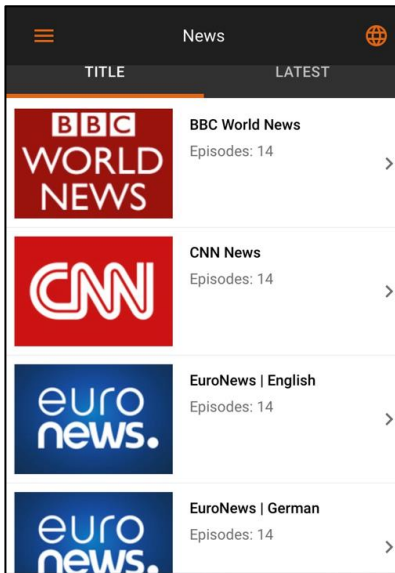


The information presented is from the BazePort Info Portal

The content published in the BazePort Info Portal is a prepared by your system owner's super user. For a detailed explanation on Info Portal, please refer to the BP-01-UM-015 User Manual BazePort Management Studio – Publish.

NEWS

In the News section the users can browse and watch News episodes on their device.



At the very top, it is possible to sort in by *Title* or by *Latest*. To sort in a specific way, simply tap the desired one.

Note that there may be several news episodes from each News provider.

Choose the > arrow and < arrow to open all episodes within the News service or close the episodes.



All the **News** posters can be tapped to display more information. The page displayed then will contain a **Play button**.

The video can be tapped to display the video controls: **Play/pause** button, **Time line**, **Volume** and button for **Toggle full screen view**.

To skip to any point in the video, touch and drag the dot on the time line.

DID YOU KNOW?



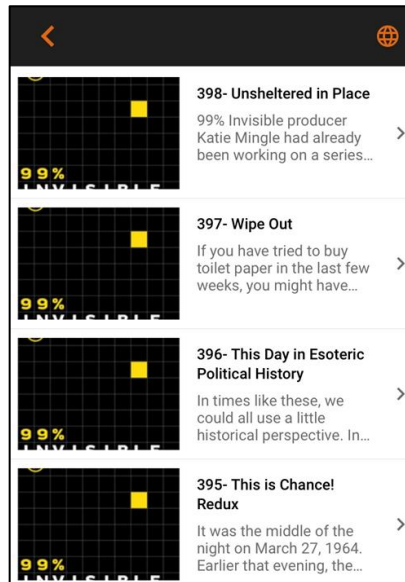
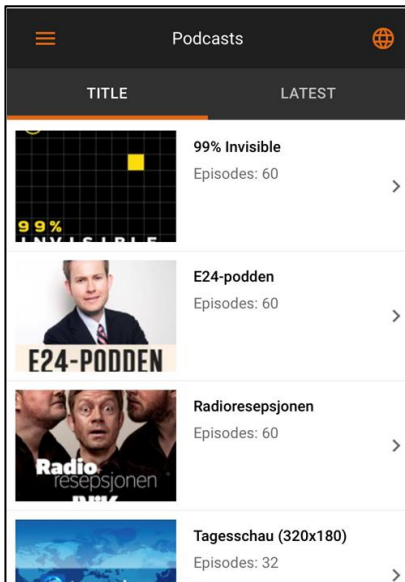
The News presented are from the BazePort News service

Your system owner may subscribe to BazePort Content Services News services and made the News available in the web app. For a detailed explanation on Entertainment, please refer to the BP-01-UM-017 User Manual BazePort Management Studio – Entertainment.

Your web app may not have any News services. Entertainment requires extra BazePort licenses, hardware and configuration – and your system owner may have chosen not to purchase this. It also requires subscriptions.

PODCASTS

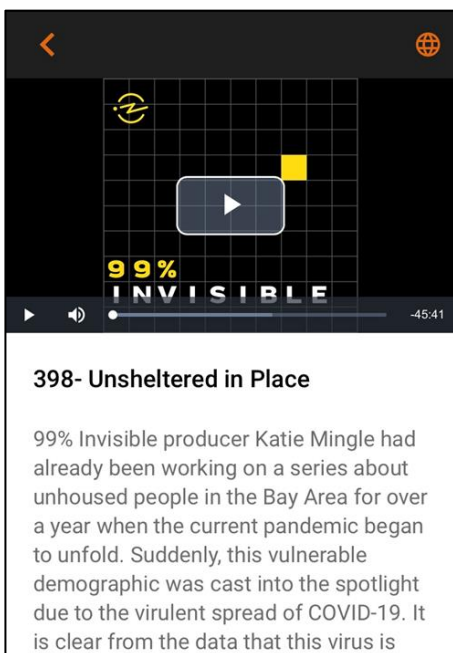
In the **Podcasts** section the users can browse and listen to or watch Podcasts on their device.



At the very top, it is possible to sort in by *Title* or by *Latest*. To sort in a specific way, simply tap the desired one.

Note that there may be several podcast episodes from each Podcast provider.

Choose the > arrow and < arrow to open all episodes within the Podcast service or close the episodes.



All the podcast posters can be tapped to display more information. The page displayed then will contain a **Play button**.

The video or audio track can be tapped to display the video or audio track controls: **Play/pause** button, **Time line**, **Volume** and button for **Toggle full screen view**.

To skip to any point in the video or audio, touch and drag the dot on the time line.

Please note that **Podcast** may be with or without video.

DID YOU KNOW?

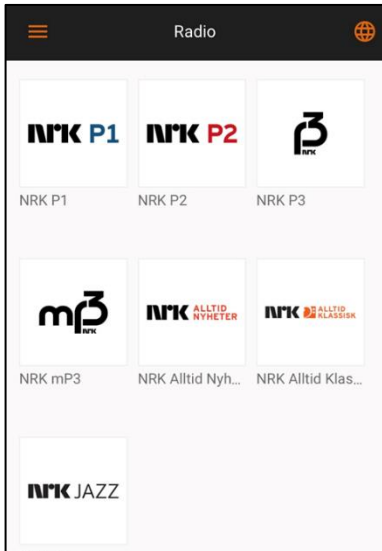


The Podcasts presented are from the BazePort Podcast service

Your system owner may have the possibility to make Podcasts available in the web app. For a detailed explanation on Entertainment, please refer to the BP-01-UM-017 User Manual BazePort Management Studio – Entertainment.

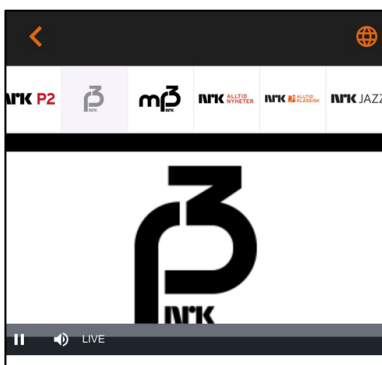
Your web app may not have any Podcasts services. Entertainment requires extra BazePort licenses, hardware and configuration – and your system owner may have chosen not to purchase this.

RADIO



In the **Radio** section of the app the user can listen to live radio streams.

Tap any of the channel logos enter a channel.



The audio track can be tapped to display audio controls: **Play/pause** button, **Time line**, **Volume** and button for **Toggle full screen view**.

To skip to any point in the audio track, touch and drag the dot on the time line.

To change channel, use the channel list located above the video area. Note: This is only available when the radio is not in full screen mode.

DID YOU KNOW?

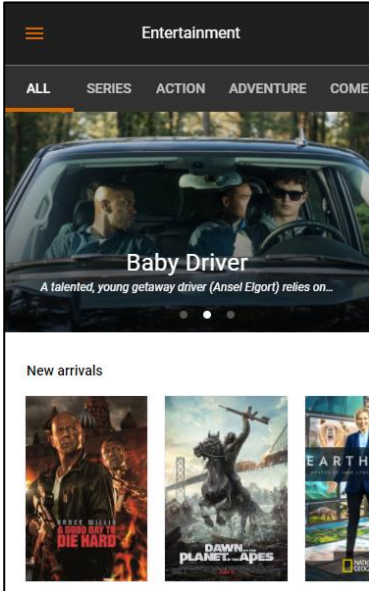


The Radio channels presented are from the BazePort radio channel list

Your system owner may have live radio channels in their BazePort system and made these available in the web app. For a detailed explanation on radio channels, please refer to the BP-01-UM-014 User Manual BazePort Management Studio – Configure.

Your web app may not have any live radio. Live radio requires extra BazePort licenses, hardware and configuration – and your system owner may have chosen not to purchase this. It may also require subscriptions

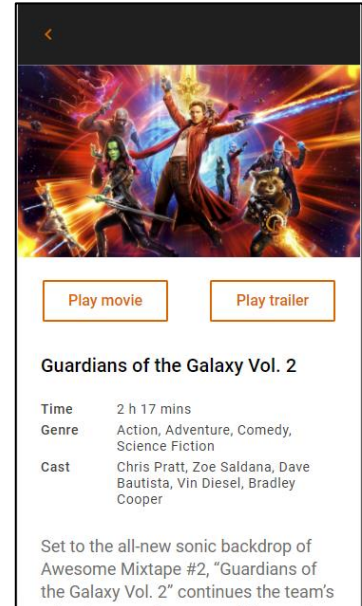
ENTERTAINMENT



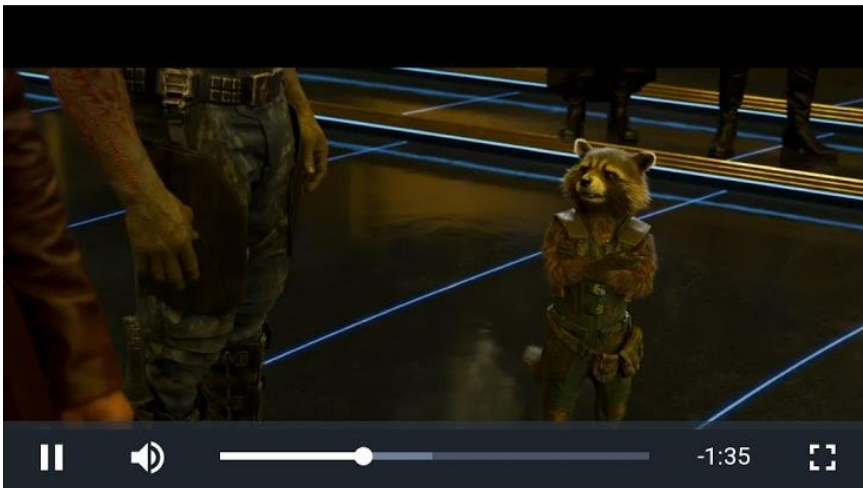
In the **Entertainment** section the users can browse and watch movies and TV series on.

At the very top there is a category menu. It's possible to swipe left and right on this to display more categories. To display movies in a specific category, simply tap the desired one.

All the movies and TV-series posters can be tapped to display more information. The page displayed then will also contain a **Trailer** button and a **Play** button if a trailer and/or movie is available.



When the **Trailer** button is tapped the video will start playing a preview for the movie. If the play button is tapped, the movie will start playing.



The video can be tapped to display the video controls: **Play/pause** button, **Time line**, **Volume** and button for **Toggle full screen view**.

To skip to any point in the video, touch and drag the dot on the time line.

DID YOU KNOW?

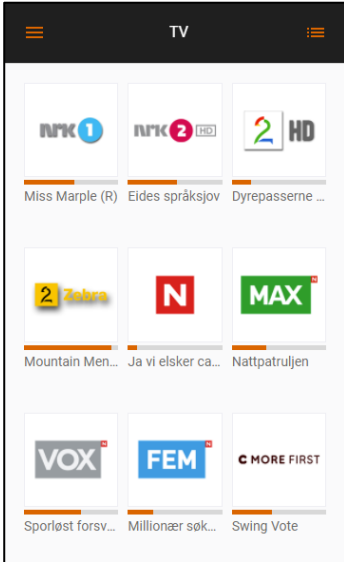


The movies and series presented are from the BazePort Movies and Series library

Your system owner may subscribe to BazePort Content Services content package and made these movies available in the web app. There may also be other movies or series that your system owner has added to the libraries. For a detailed explanation on Entertainment, please refer to the BP-01-UM-017 User Manual BazePort Management Studio – Entertainment.

Your web app may not have any movies or series. Entertainment requires extra BazePort licenses, hardware and configuration – and your system owner may have chosen not to purchase this. It may also require subscriptions.

TV



In the **TV** section of the app the user can watch live TV streams and view information on the upcoming programs. The example shown to the left is the grid view.

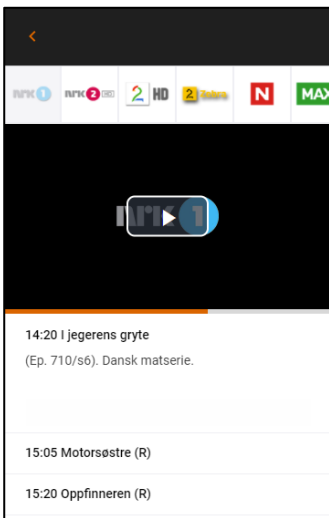
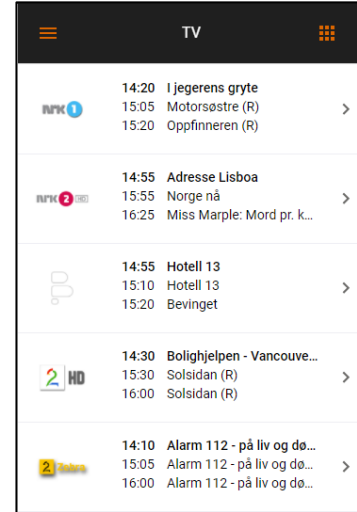


If the **List** button is pressed, a **List view** will be presented instead, as shown in the example to the right.



To switch back to the **Grid view**, simply press the **Grid** button.

Tap any of the channel logos enter a channel.



Press the **Play** button in the video area to start the channel.



When the channel has started, you can activate **Full screen mode** by pressing the **Full screen** button located at the bottom right hand side of the video area. If this is not visible, tap the video area to make the video controls appear.

To change channel, use the channel list located above the video area. Note: This is only available when the video is not in full screen mode.

Below the video area there is an **EPG (Electronic Program Guide)** for the selected channel.

DID YOU KNOW?

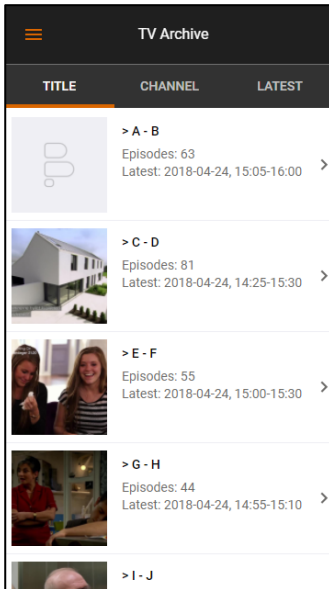


The TV channels presented are from the BazePort TV channel list

Your system owner may have live TV channels in their BazePort system and made these available in the web app. For a detailed explanation on TV channels, please refer to the BP-01-UM-014 User Manual BazePort Management Studio – Configure.

Your web app may not have any live TV. Live TV requires extra BazePort licenses, hardware and configuration – and your system owner may have chosen not to purchase this. It may also require subscriptions

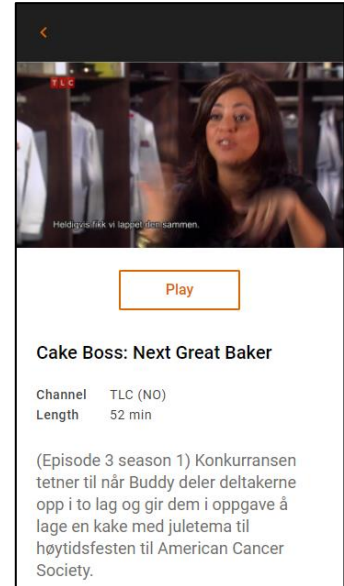
TV ARCHIVE



The **TV archive** contains recorded programs from TV channels on the **BazePort system**.

At the top of the initial screen in the **TV Archive** section you can group/filter the recordings by *Title*, *Channel* or *Latest*. *Title*, which is the default selection, displays a grouped alphabetical list of the programs. In the *Channel* section you can browse the programs by channel, and in the *Latest* section shows a list of up to 100 most recently recorded programs.

Tap the items to navigate to the program you want to watch, then press the **Play** button to start watching the show.



DID YOU KNOW?

The TV archive presented are from the BazePort TV archive

Your system owner may have live TV channels with possibility to record TV archive in their BazePort system and made these available in the web app. For a detailed explanation on TV channels and TV archive, please refer to the BP-01-UM-014 User Manual BazePort Management Studio – Configure.

Your web app may not have any TV Archive. TV archive (and live TV) requires extra BazePort licenses, hardware and configuration – and your system owner may have chosen not to purchase this. Live TV may also require subscriptions



ABOUT THIS DOCUMENT

This is a BazePort **User Manual** from Baze Technology.

If you have any comments to this document, please email them to support@bazeport.com. Remember to include the document id: **BP-01-UM-019_6A BazePort Web App**

Revision	Status	Date	Description	Writer	Controller	Approver
4	A		BP 6.7 version	SST	JC	
5	A	21.04.2020	BP 8 version	GHK	SST	GHK
6	A	13.10.2020	BP 8.1 release	GHK	SST	GHK

This **User Manual** is the property of Baze Technology AS, and the content must not be reproduced in any form.



About Baze Technology

Baze Technology is the leading provider of BazePort IPTV. Located in Porsgrunn, Norway. Baze Technology has delivered its products to customers all over the world since 2009. Today there are more than 400 installations with almost 50.000 users of BazePort worldwide.

Request a BazePort demo

In order to get a dedicated BazePort demo, please visit:
www.bazeport.com,
e-mail: sales@bazeport.com

bazeport **Baze Technology AS**
Moen 15, 3948 Porsgrunn, Norway
www.bazeport.com